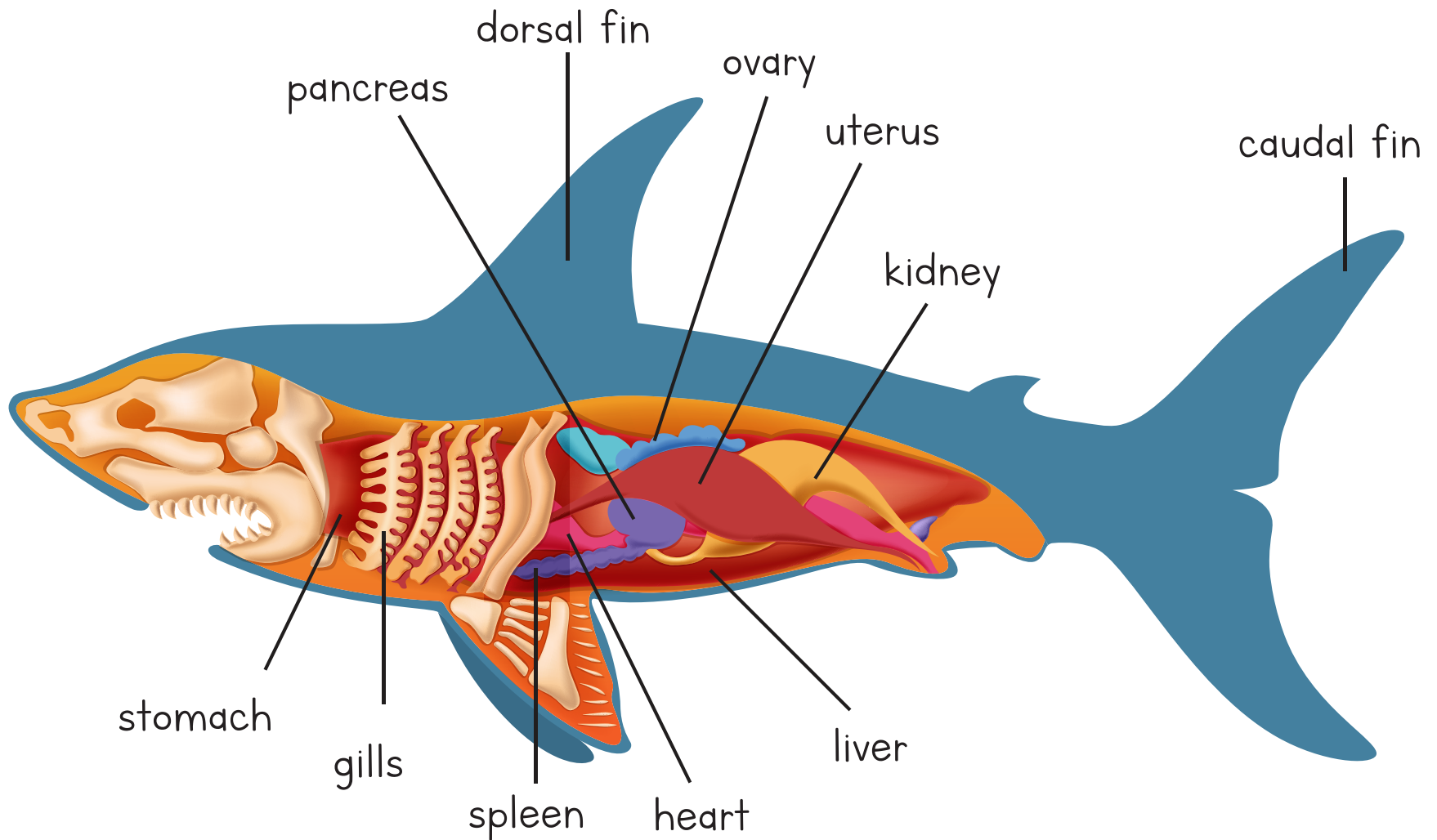
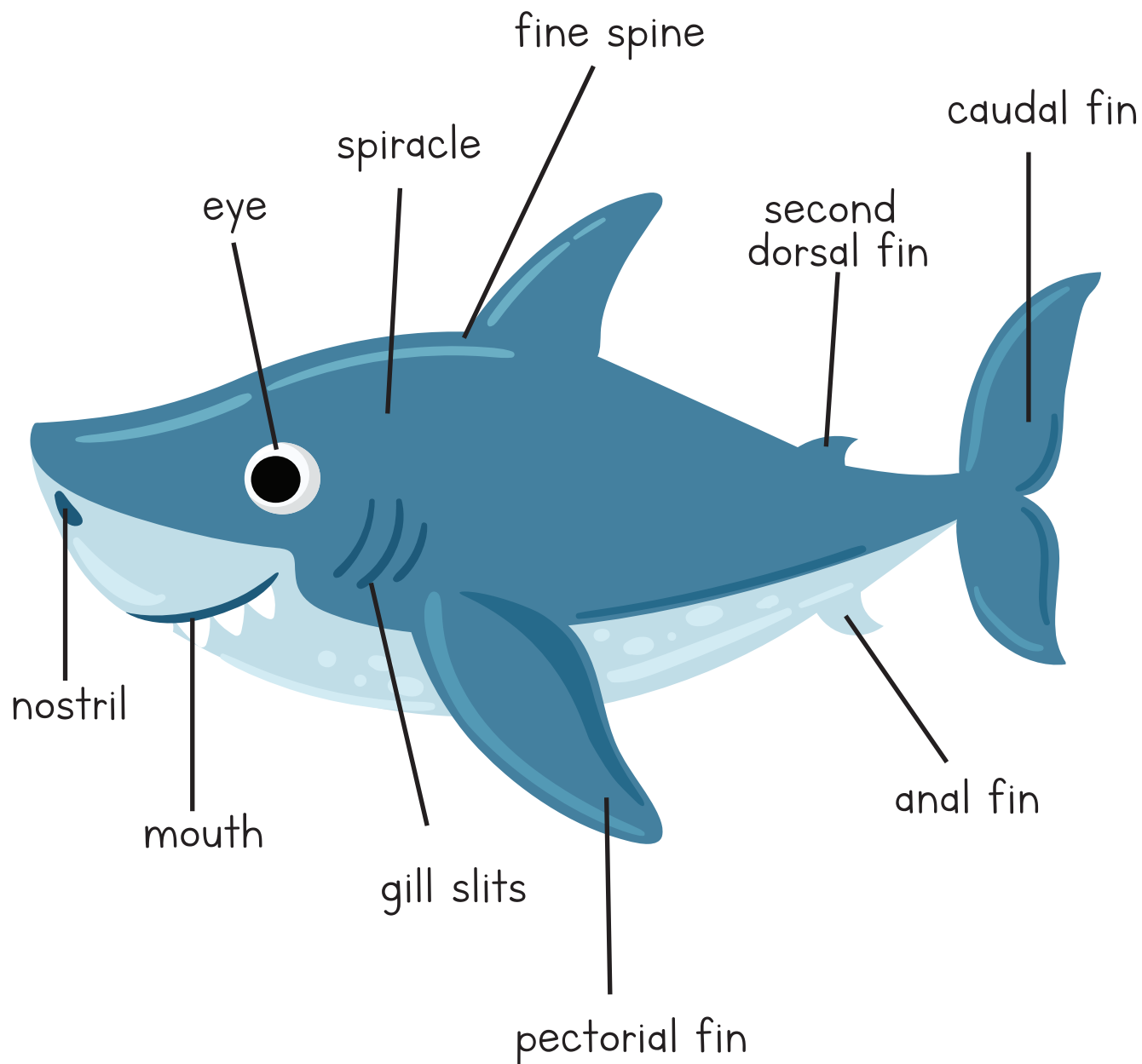


# Shark Internal Anatomy



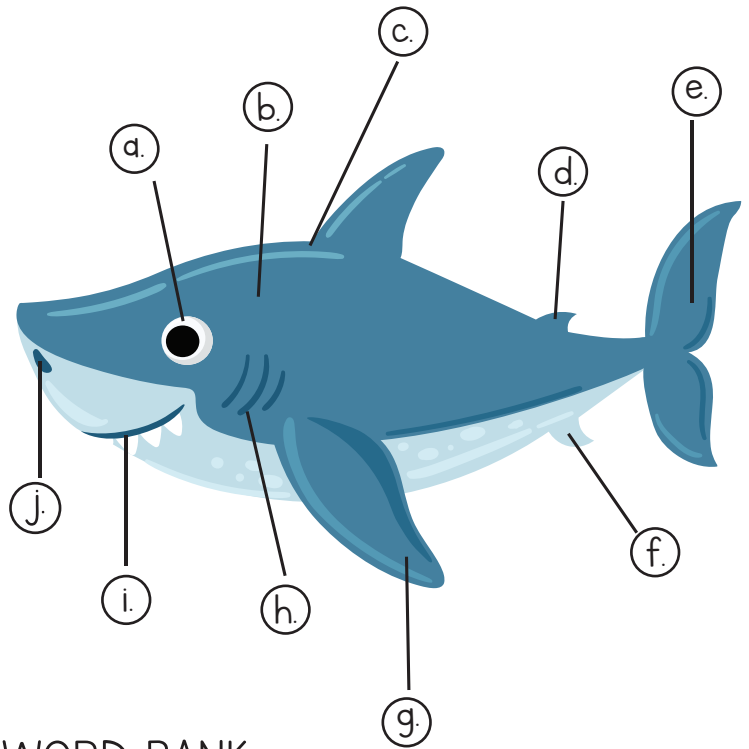
Name: \_\_\_\_\_

# Body Parts of a Shark



Name: \_\_\_\_\_

# Body Parts of a Shark Identification



- a. \_\_\_\_\_
- b. \_\_\_\_\_
- c. \_\_\_\_\_
- d. \_\_\_\_\_
- e. \_\_\_\_\_
- f. \_\_\_\_\_
- g. \_\_\_\_\_
- h. \_\_\_\_\_
- i. \_\_\_\_\_
- j. \_\_\_\_\_

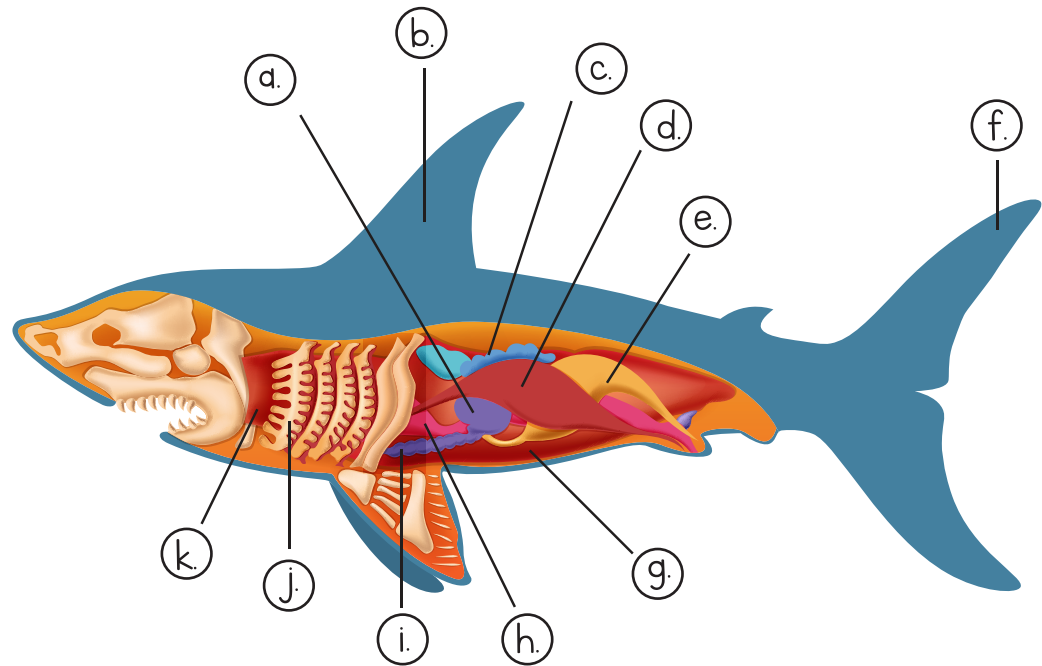
## WORD BANK

pectoral fin	second dorsal fin
spiracle	anal fin
fine spine	mouth
eye	gill slits
caudal fin	nostril

Name: \_\_\_\_\_

# Shark Internal Anatomy Identification

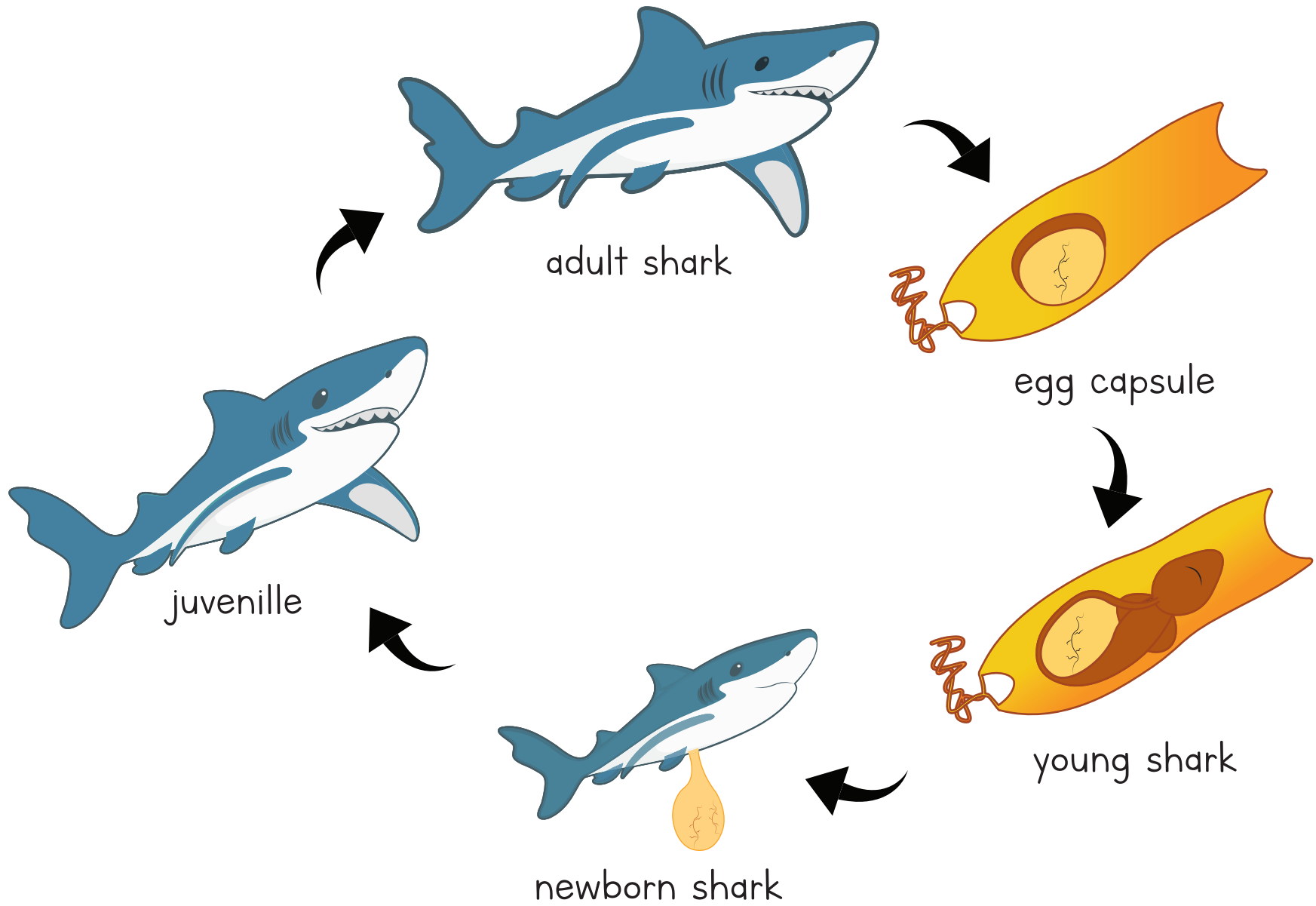
- a. \_\_\_\_\_
- b. \_\_\_\_\_
- c. \_\_\_\_\_
- d. \_\_\_\_\_
- e. \_\_\_\_\_
- f. \_\_\_\_\_
- g. \_\_\_\_\_
- h. \_\_\_\_\_
- i. \_\_\_\_\_
- j. \_\_\_\_\_
- k. \_\_\_\_\_



## WORD BANK

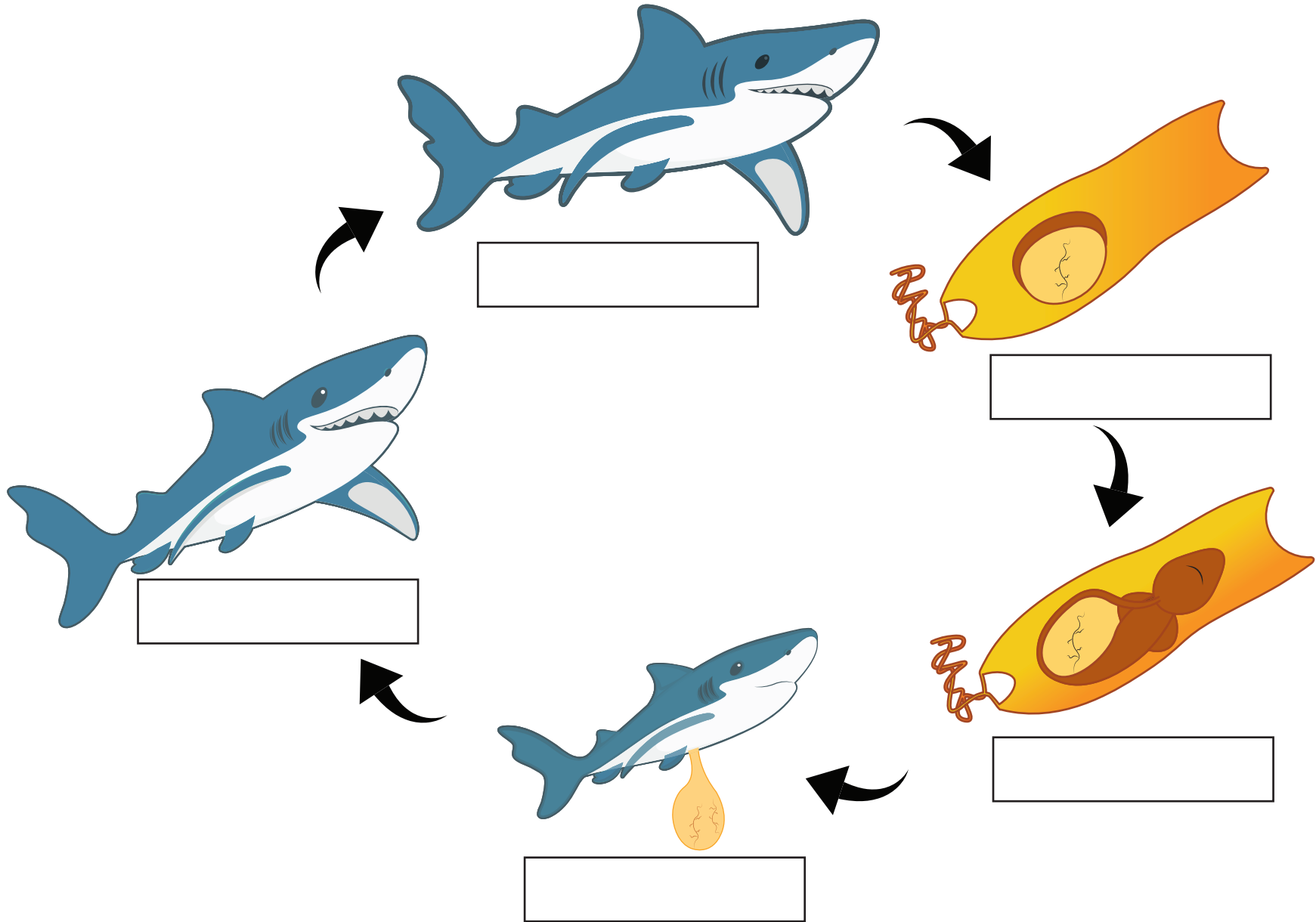
dorsal fin	kidney	uterus
liver	pancreas	stomach
heart	spleen	ovary
caudal fin	gills	

# Shark Life Cycle



Name: \_\_\_\_\_

# Shark Life Cycle Labelling



Name: \_\_\_\_\_

## Shark Under the Sea Mapping Coordinates

<b>4</b>					
<b>3</b>					
<b>2</b>					
<b>1</b>					
	<b>A</b>	<b>B</b>	<b>C</b>	<b>D</b>	<b>E</b>

When run

Draw a coral in coordinate A1.

Draw a clam in coordinate B4.

Draw a starfish in coordinate C3.

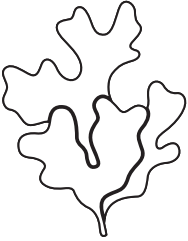
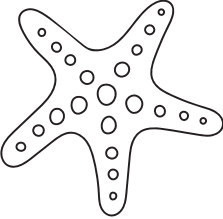
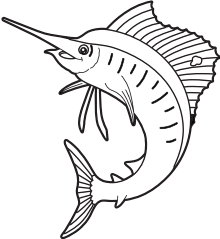
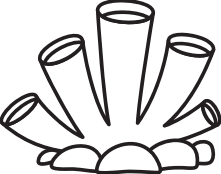
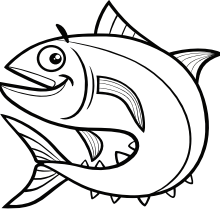
Draw a seaweed in coordinate D4.

Draw a tuna in coordinate E1.

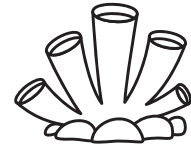
Draw a marlin in coordinate E2.

Name: \_\_\_\_\_

# Shark Under the Sea Mapping Coordinates

4					
3					
2					
1					
	<b>A</b>	<b>B</b>	<b>C</b>	<b>D</b>	<b>E</b>

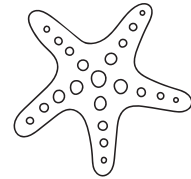
Write the coordinates of these places in the map.



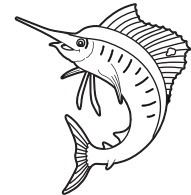
\_\_\_\_\_



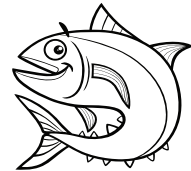
\_\_\_\_\_



\_\_\_\_\_



\_\_\_\_\_



\_\_\_\_\_

Name: \_\_\_\_\_

# Shark Word Search

C	O	L	D	B	L	O	O	D	E	D	D	T	T	P
A	L	O	I	P	U	I	P	U	A	D	D	A	A	R
R	R	E	M	S	M	I	P	E	A	A	A	I	E	E
N	O	S	T	R	I	L	H	E	A	A	A	L	E	D
I	L	O	I	P	R	R	E	M	A	F	O	O	E	A
V	A	O	M	M	M	L	H	E	A	I	T	T	E	T
O	A	O	O	P	R	O	C	E	A	N	T	T	O	O
R	A	O	U	M	M	L	H	N	N	S	T	T	O	R
E	A	O	T	P	R	L	H	N	N	S	T	T	T	G
E	E	E	H	M	M	L	G	I	L	L	S	G	G	G
P	P	P	P	P	R	L	S	S	S	S	S	S	I	G
B	O	N	E	L	E	S	S	I	L	L	S	B	I	G

## WORD BANK

GILLS

TAIL

MOUTH

HEAD

NOSTRIL

CARNIVORE

OCEAN

PREDATOR

BIG

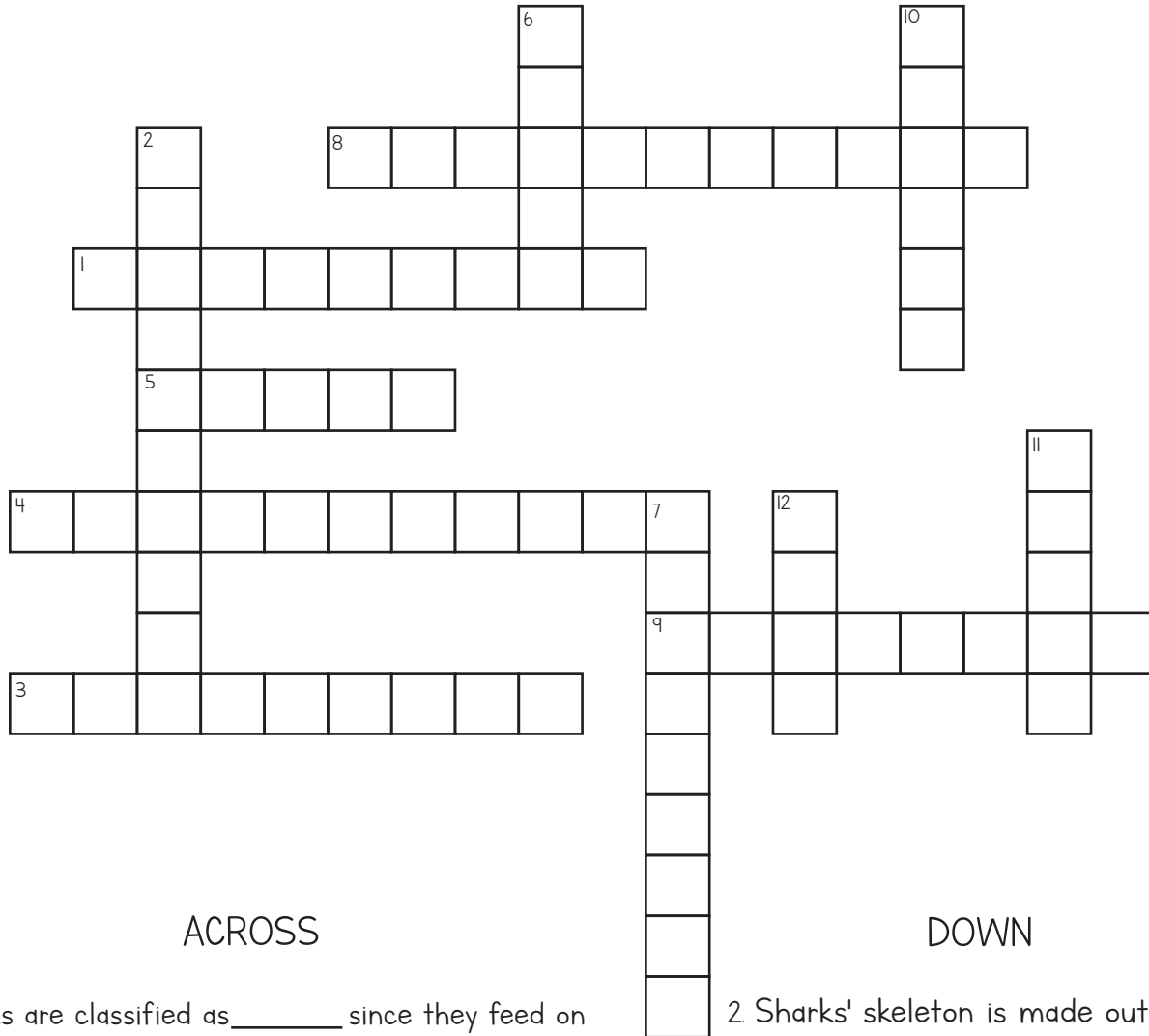
COLD-BLOODED

BONELESS

FINS

Name: \_\_\_\_\_

# Shark Crossword Puzzle



## ACROSS

1. Sharks are classified as \_\_\_\_\_ since they feed on smaller fish, marine mammals, and smaller sharks.

3. Sharks have lighter \_\_\_\_\_ which help them to be fast swimmers

4. Sharks are \_\_\_\_\_ since they adapt to the water's temperature.

5. Shark uses their \_\_\_\_\_ to filter.

8. Sharks are considered \_\_\_\_\_ because of their backbones.

9. Sharks have sensitive \_\_\_\_\_ they use to smell prey from a distance.

## DOWN

2. Sharks' skeleton is made out of \_\_\_\_\_ .

6. Sharks' habitat is in the \_\_\_\_\_ .

7. The scales of the sharks are called dermal \_\_\_\_\_ .

10. Sharks are found in \_\_\_\_\_ .

11. Sharks use their \_\_\_\_\_ to take oxygen and eliminate carbon dioxide.

12. Sharks are considered \_\_\_\_\_ .