

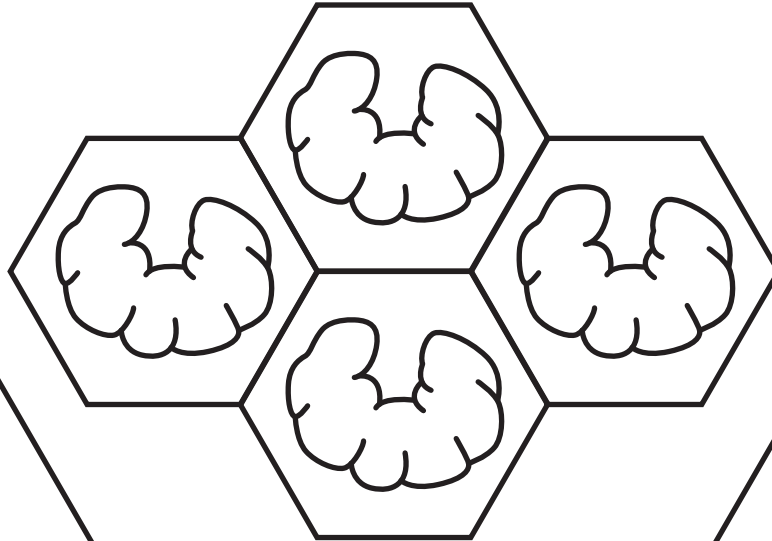
**Honey Bee**  
**Life Cycle**

Cut the broken lines  
and paste the foldouts from the other page

Paste Here

# Egg Stage

*The life of a honey bee starts when the queen bee lays an egg. She lays each egg in a tiny cell within the honeycomb. The egg is very small, white, and shaped like a grain of rice.*

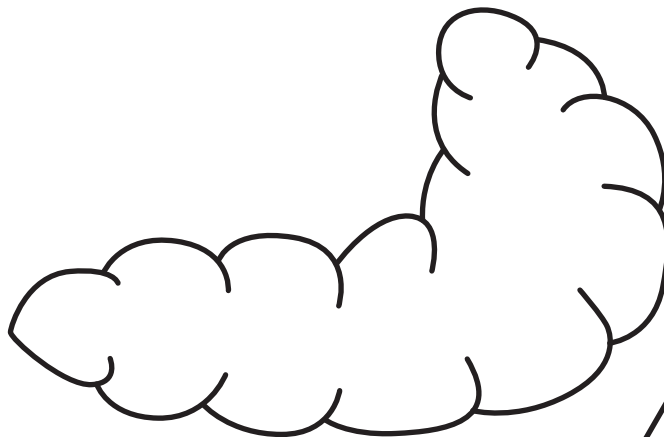


Fold Here

Fold Here

# Larva Stage

*After about three days, the egg hatches into a larva. At this stage, the larva looks like a small, white worm. Worker bees feed the larva a special substance called royal jelly, which helps it grow quickly.*

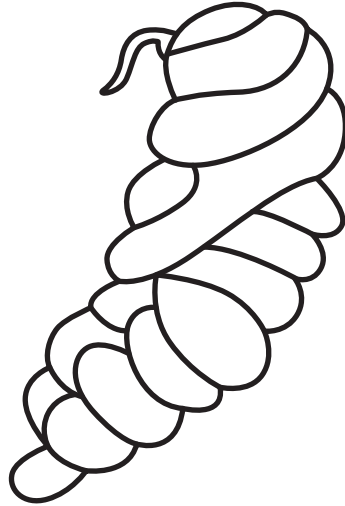


Paste Here

Paste Here

# Pupa Stage

*After about a week, the larva spins a cocoon around itself. Inside the cocoon, it transforms into an adult bee. This stage is called the pupa stage. While inside the cocoon, the bee undergoes many changes, developing its wings, legs, and other body parts.*



Fold Here

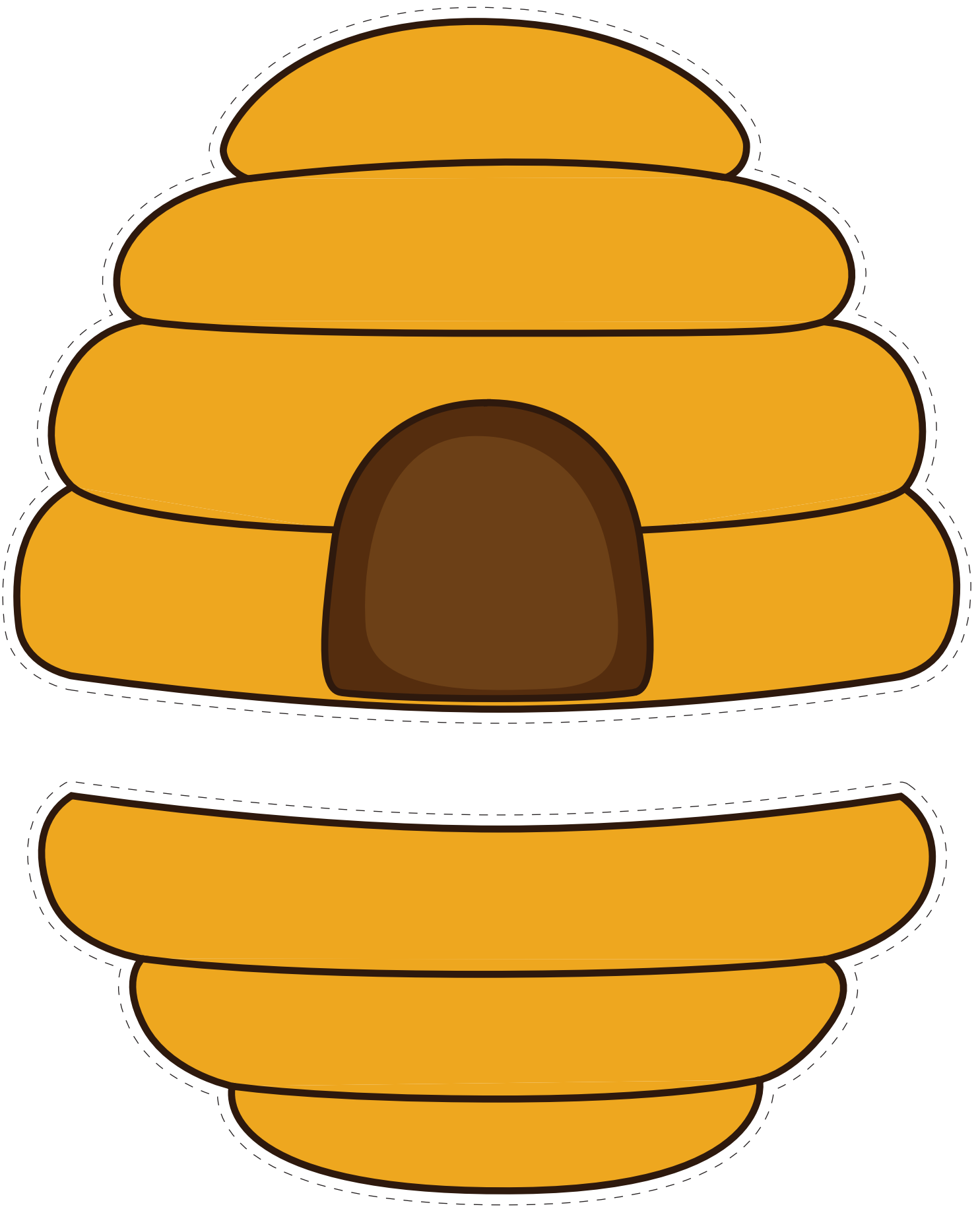
Fold Here

# Adult Bee Stage

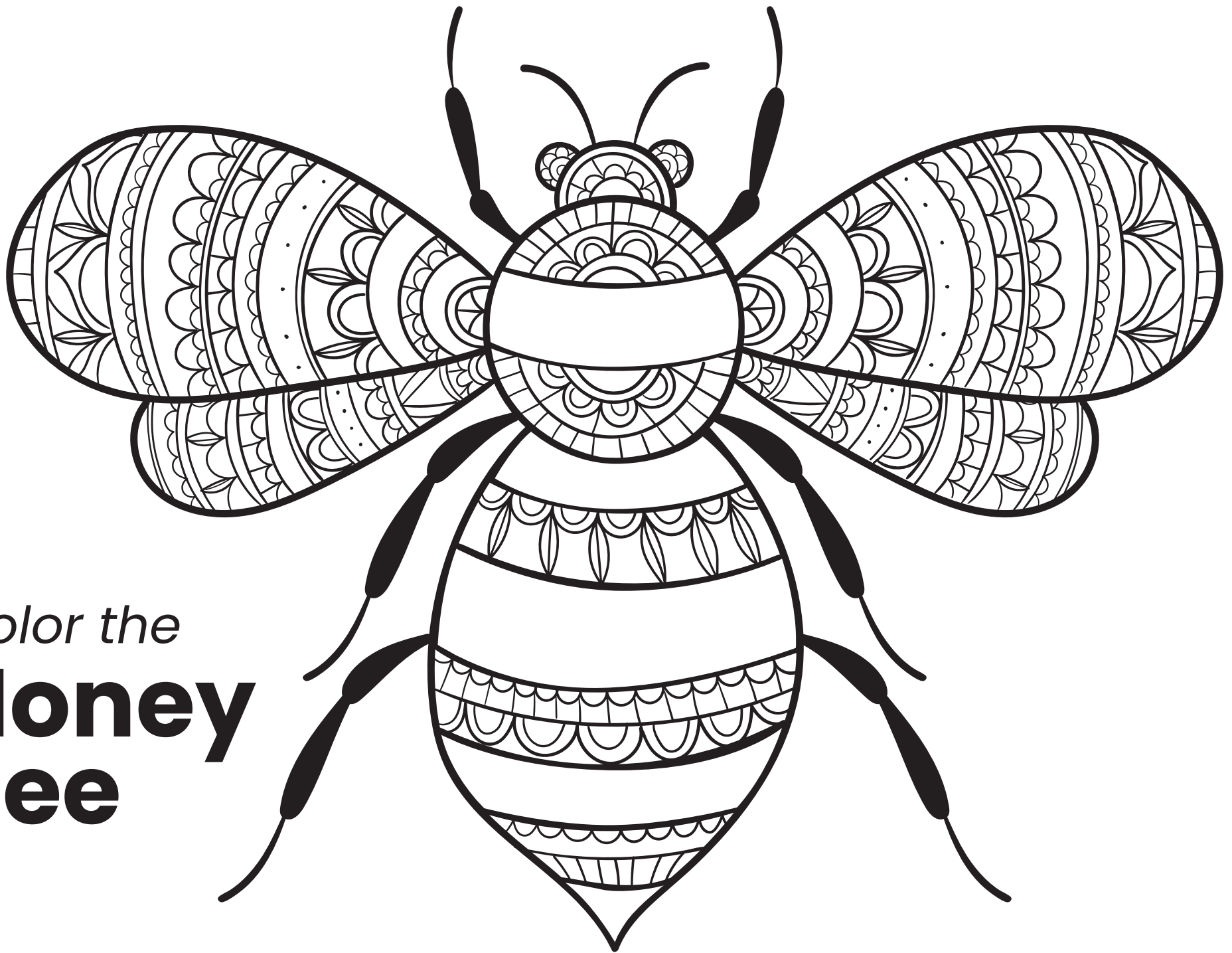
*After about a week, the larva spins a cocoon around itself. Inside the cocoon, it transforms into an adult bee. This stage is called the pupa stage. While inside the cocoon, the bee undergoes many changes, developing its wings, legs, and other body parts.*



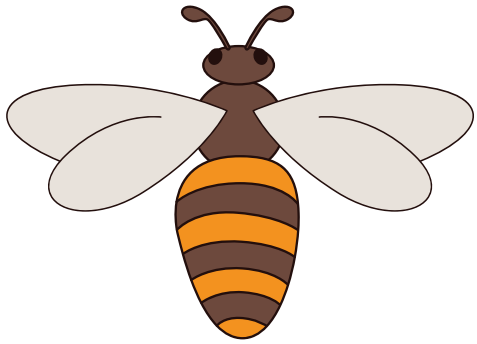
Paste Here



Cut the broken lines  
and paste the foldouts from the other page



*Color the*  
**Honey  
Bee**



*Build a*  
**Honey  
Bee**

