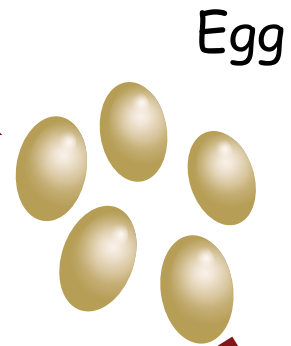


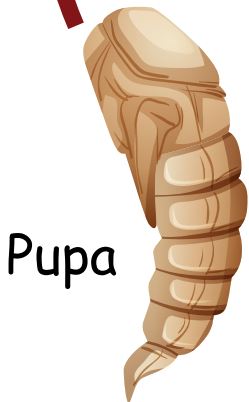


Adult
Beetle

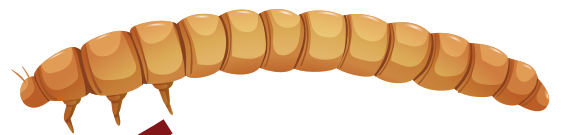


Egg

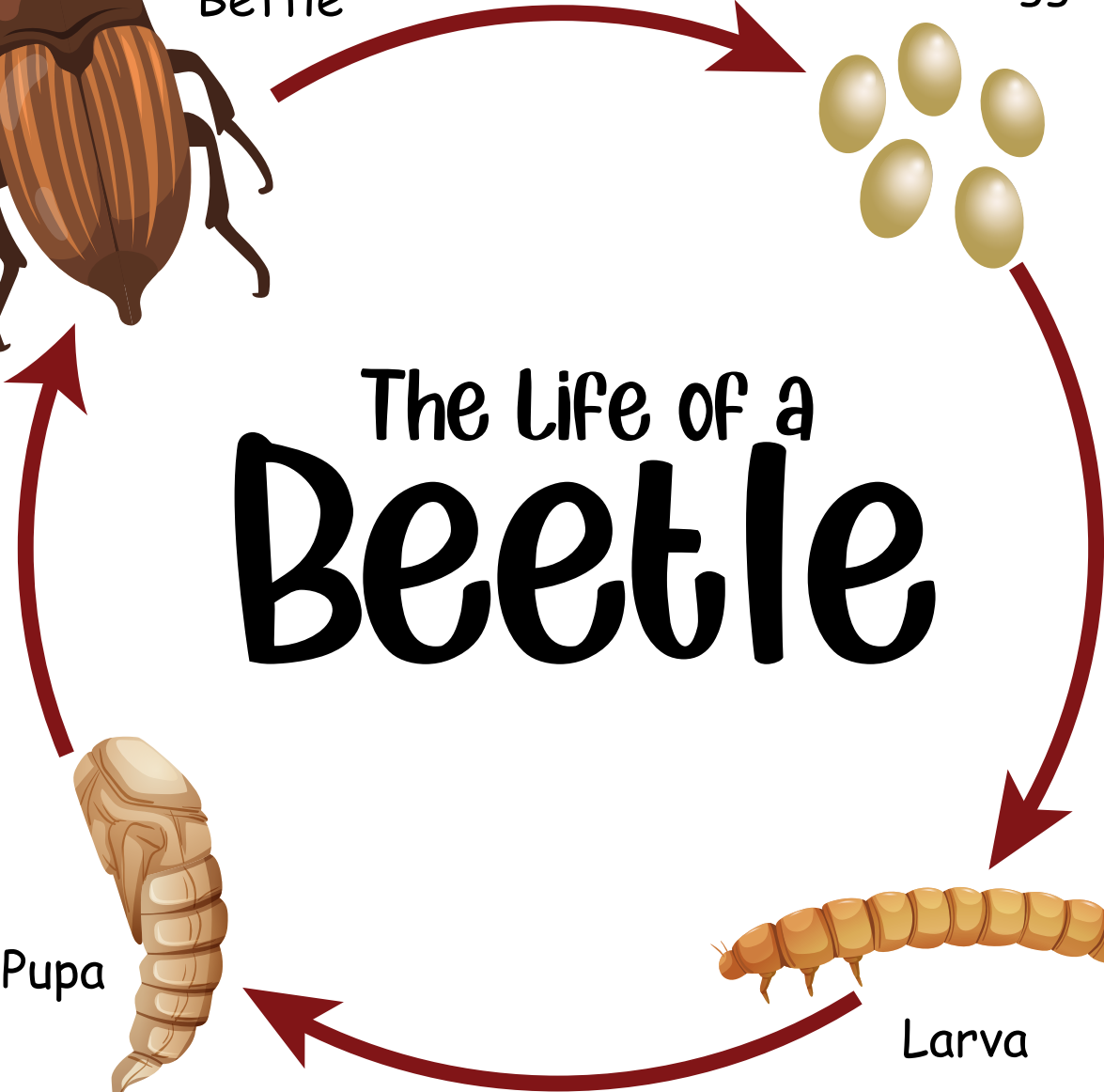
The Life of a Beetle



Pupa

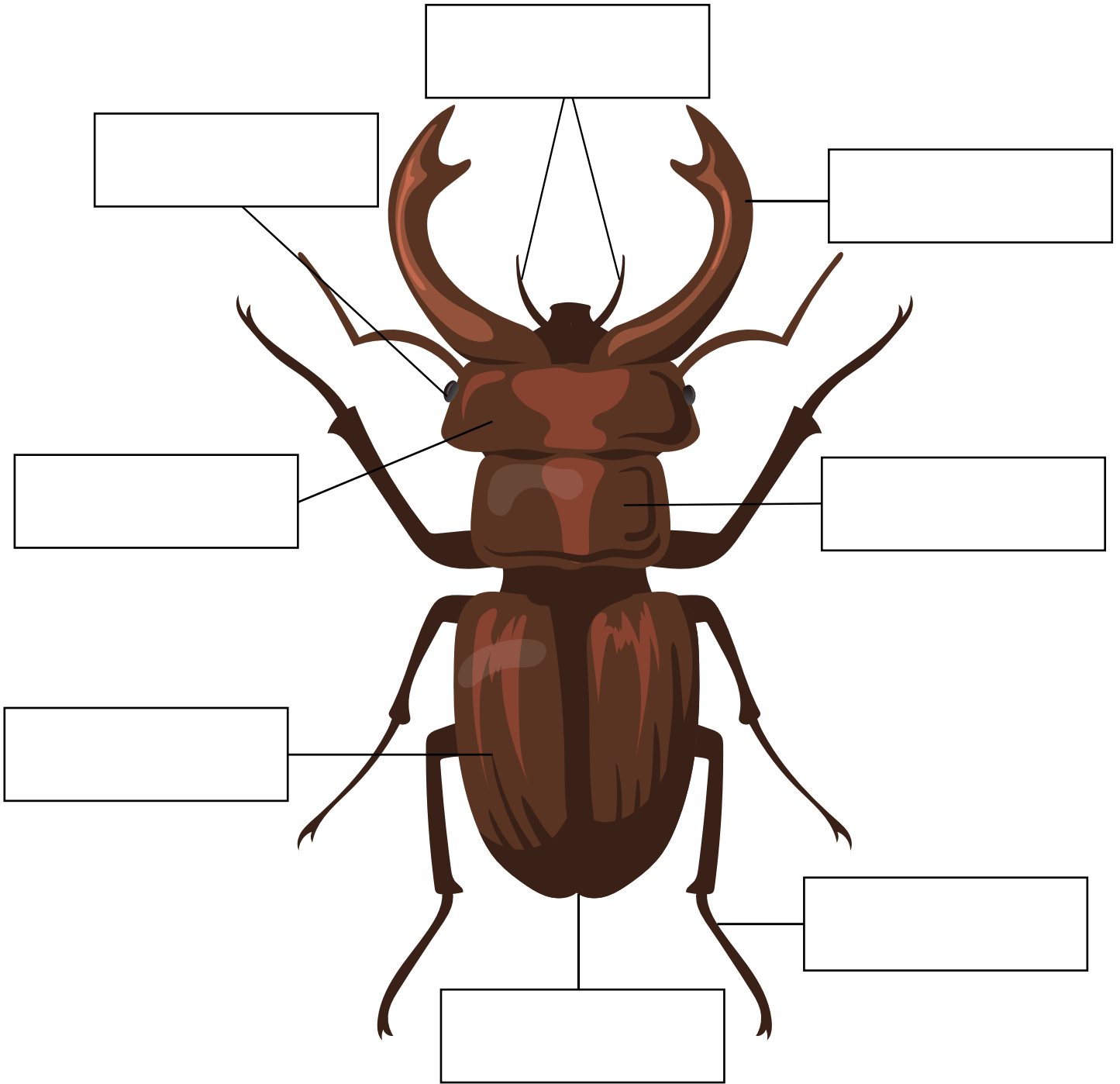


Larva



NAME: _____

Label a Beetle



Horn	Wings	Head	Abdomen
Thorax	Legs	Antenna	Eyes

NAME: _____

All About Beetle

3-2-1 Organizer

3 Things
I have learned

1. _____
2. _____
3. _____

2 Interesting
Facts

1. _____
2. _____

1 Question
I still have

1. _____

Anatomy of a Beetle

Antenna

These sensitive appendages are organs of smell and touch

Eyes

Most beetles have compound eyes made up of many separate lenses

Thorax

The legs and the wings are attached to this part of the beetle's body

Head

The eyes, ears, mandibles, antenna, and brain are located here

Wings

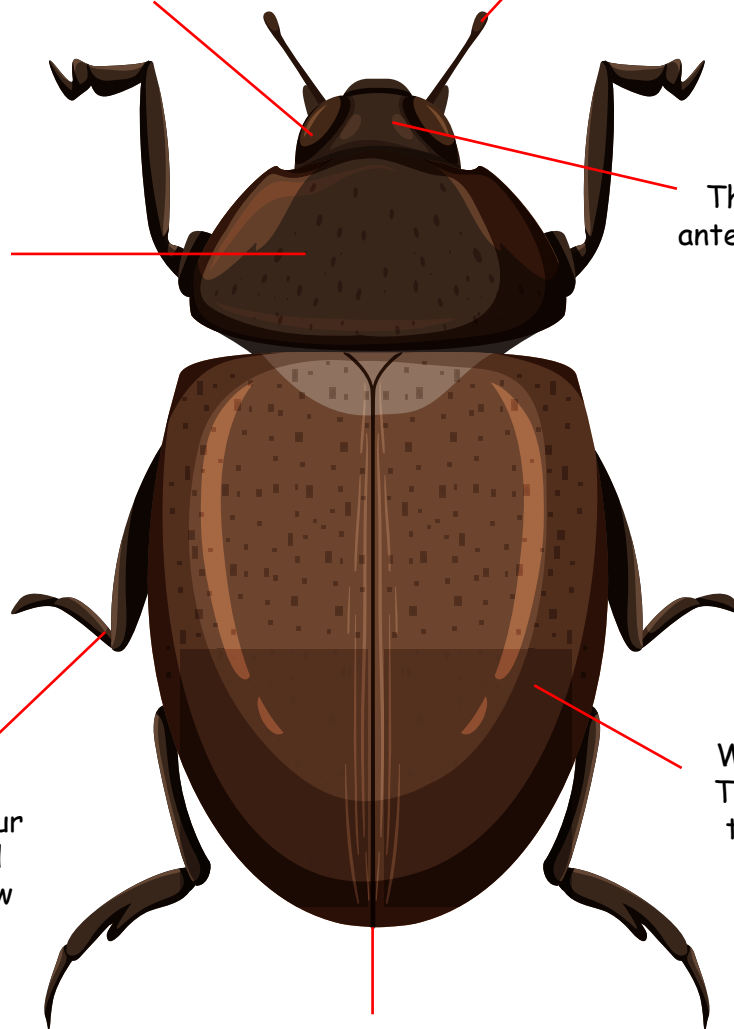
Wings are thin and flexible. They fold up and tuck under the wing casings when not in use

Legs

Most beetles have four leg parts connected with joints that allow movement

Abdomen

Food is digested here. The beetle's reproductive organs are also located in the abdomen.



NAME: _____

Beetle Puzzle

A	E	J	H	O	R	N	E	K
C	N	L	L	E	G	E	G	Z
Z	K	T	T	A	H	M	G	L
H	A	H	E	E	Q	O	E	A
E	D	O	X	N	E	D	Y	R
A	U	R	H	L	N	B	E	V
D	L	A	P	U	P	A	Q	A
R	T	X	W	I	N	G	S	U

Larva

Egg

Thorax

Abdomen

Eye

Leg

Wings

Head

Beetle

Pupa

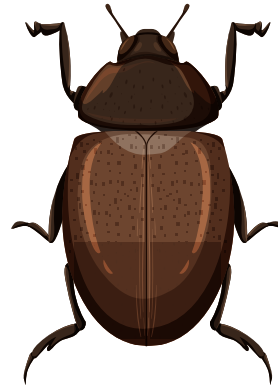
Horn

Adult

Kinds of Beetle



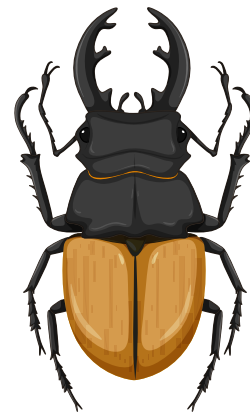
Asian Lady Beetle



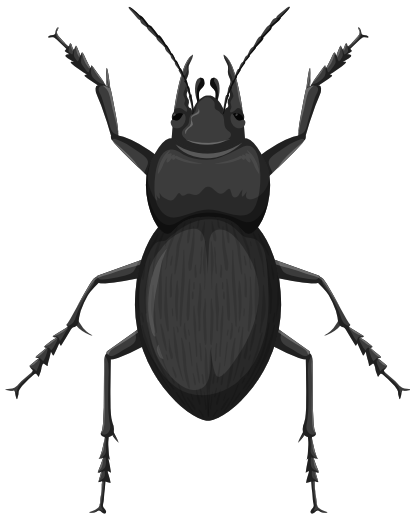
Rain Beetle



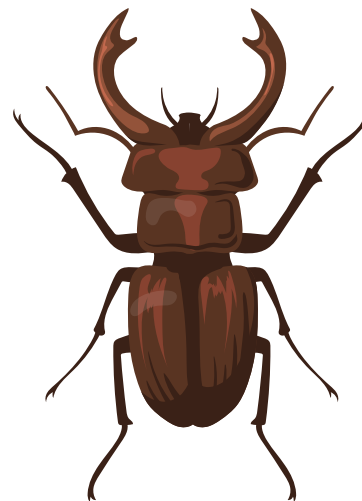
Colorado Potato Beetle



Long-horned Beetle

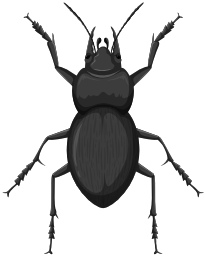


Ground Beetle



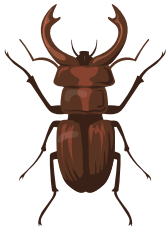
Stag Beetle

Beetle Match



•

• Asian Lady Beetle



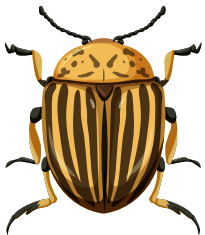
•

• Long-horned Beetle



•

• Stag Beetle



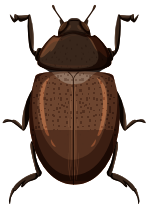
•

• Rain Beetle



•

• Colorado Potato Beetle



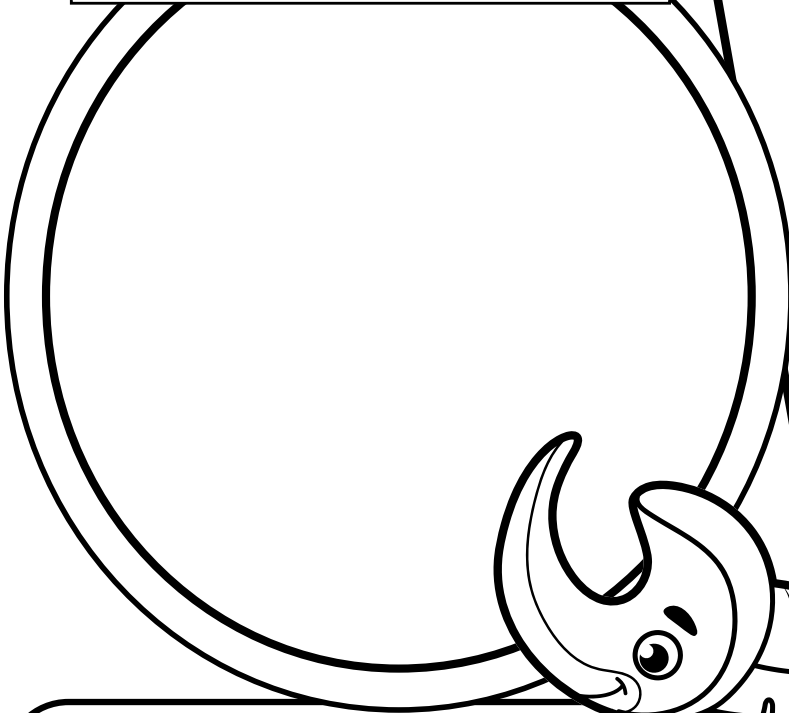
•

• Ground Beetle

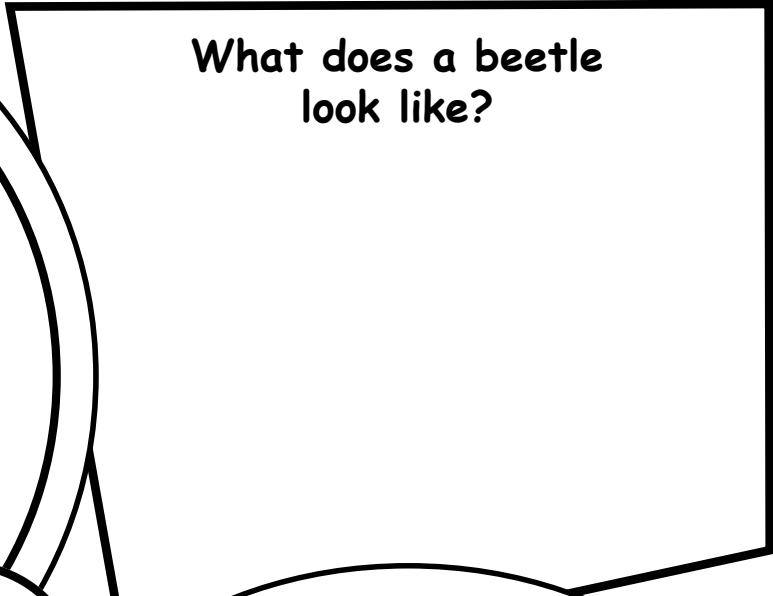
NAME: _____

All About Beetle

Describe each stage of a beetle's life cycle.



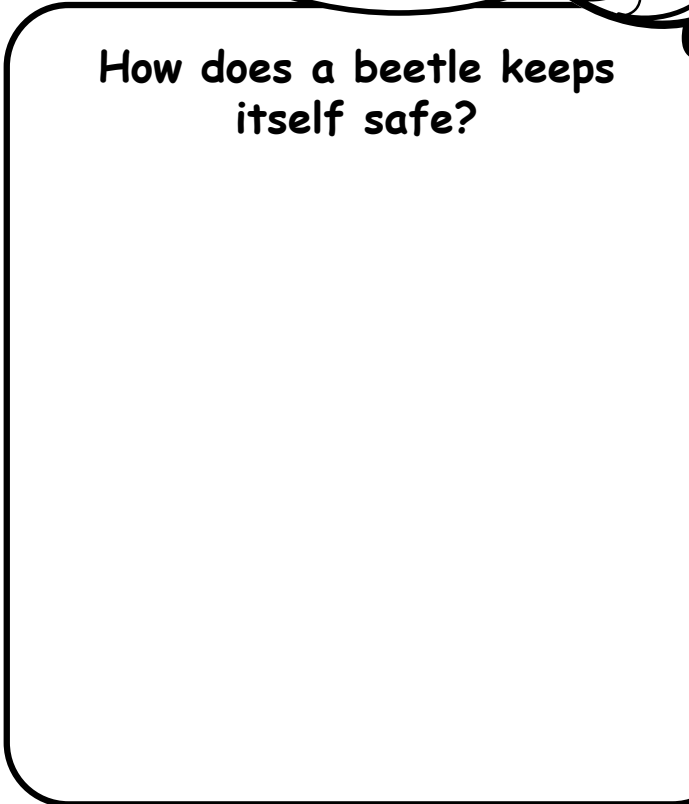
What does a beetle look like?



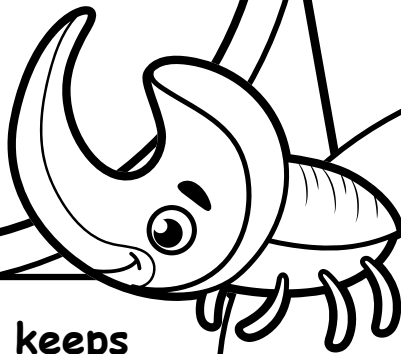
Where do beetle's live?



How does a beetle keeps itself safe?



List some things that beetle's eat:



NAME: _____

Life of a Beetle

*Directions: Cut and paste the life cycle of a beetle into the correct order.
Then write a few sentences about it.*

<i>First,</i>	<i>paste here</i>	<i>Next,</i>	<i>paste here</i>
<i>Then,</i>	<i>paste here</i>	<i>Last,</i>	<i>paste here</i>

First,

Next,

Then,

Last,

